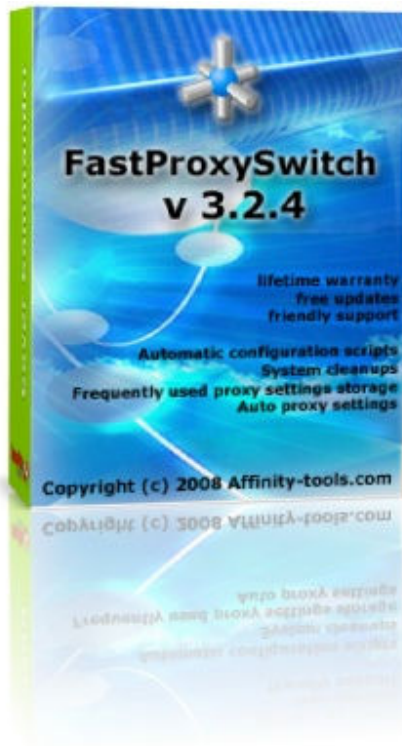


# FastProxySwitch

v3.2.4



## User Guide

# Contents

<b>Contents .....</b>	<b>Error! Bookmark not defined.</b>
Introduction .....	3
Benefits of the program.....	6
Functionalities of the program .....	7
User Interface .....	8
Quick Start Guide .....	10
After Installation .....	10
Accessing the Program from the System Tray .....	11
Setting up proxies .....	12
Working with proxies.....	15
Cleaning up after proxy setting changes: .....	16
Get External IP Address: .....	17
Summary .....	18

## Introduction

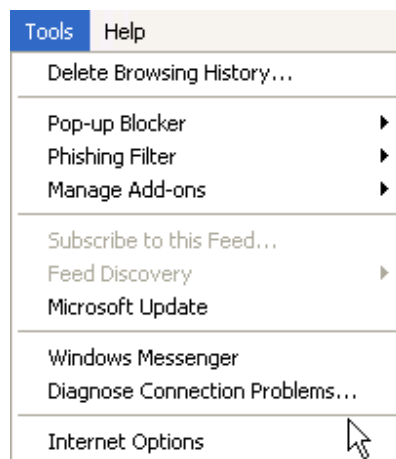
FastProxySwitch 3.2.4 is the latest version of the popular utility developed by the team at Affinity Tools to help simplify the process of proxy server setting configuration.

A proxy server is the interface between your computer and another computer on a remote or local network. Its purpose is to speed up the connection by caching the information and data you are retrieving, saving redundant or multiple accesses and requests to the server, thus improving the overall speed and efficiency.

It is no different to other applications that run on your computer, except that its job is to pass requests and responses from the client computer to the server, where the resources (e.g. files, webpages, email) are stored.

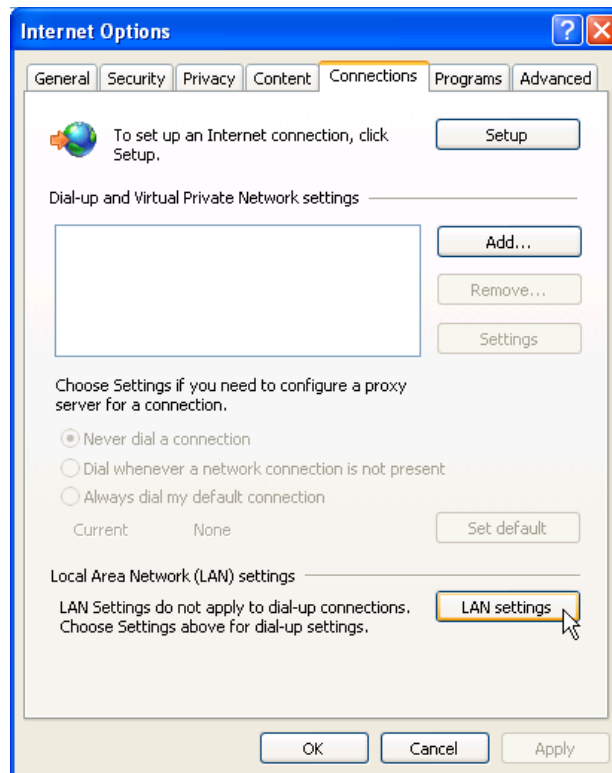
FastProxySwitch is essentially an application that enables users to change the active proxy configuration settings that you use to access information from the servers on your computer. You are probably already familiar with this process using the tools provided by Internet Explorer.

When you run Internet Explorer, there is an option under the Tools menu called Internet Options.

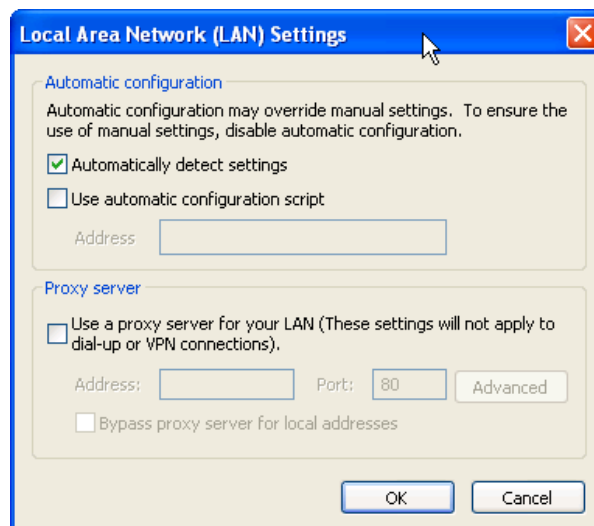


It allows you to bring up a panel for configuring your Internet Options.

And you should see the LAN settings button, which brings up the window for entering and setting your proxy configurations.



And this is what the window looks like. Look familiar?



If you are already familiar with all of this, then you'll understand the frustrating thing about having to switch proxy configuration settings. This is particularly relevant to laptop users, because they are often moving about and connecting to services via virtual private networks (VPNs).

On particular local area networks (LANs), it is not possible to access the Internet without a company/ISP proxy server, so it is most likely that you have a separate proxy setup in order to connect to each of these networks, and you are having to switch to the appropriate configurations and settings as you move about. Although it is not a very complicated process, when you have lots of profiles and configurations, it can become a bit of an issue that takes up unnecessary time and effort.

This is where FastProxySwitch comes into its own...

## **Benefits of the program**

In a nutshell, FastProxySwitch allows you to create, edit and delete proxy settings, as well as making the process of switching from one setting to another to occur seamlessly and on the fly. The changes are updated accordingly both in Internet Explorer and the System from the one application. This is definitely preferable to opening windows after windows and modifying setting everytime you have access different networks.

Changing active proxy settings is also a good practice because it will give you anonymity while surfing the net. There is an additional benefit of being able to access certain sites blocked by IT restrictions bypassing your IT department's restrictions.

One of user-friendly feature of this program is that if you still want to change your proxy settings using Internet Explorer, FastProxySwitch will automatically detect these changes and update your System settings, or create a new profile if required. This way, no matter how you adjust your settings and configurations, FastProxySwitch always ensures that the settings are current and up-to-date.

Imagine all the time and trouble you'll be saving yourself!

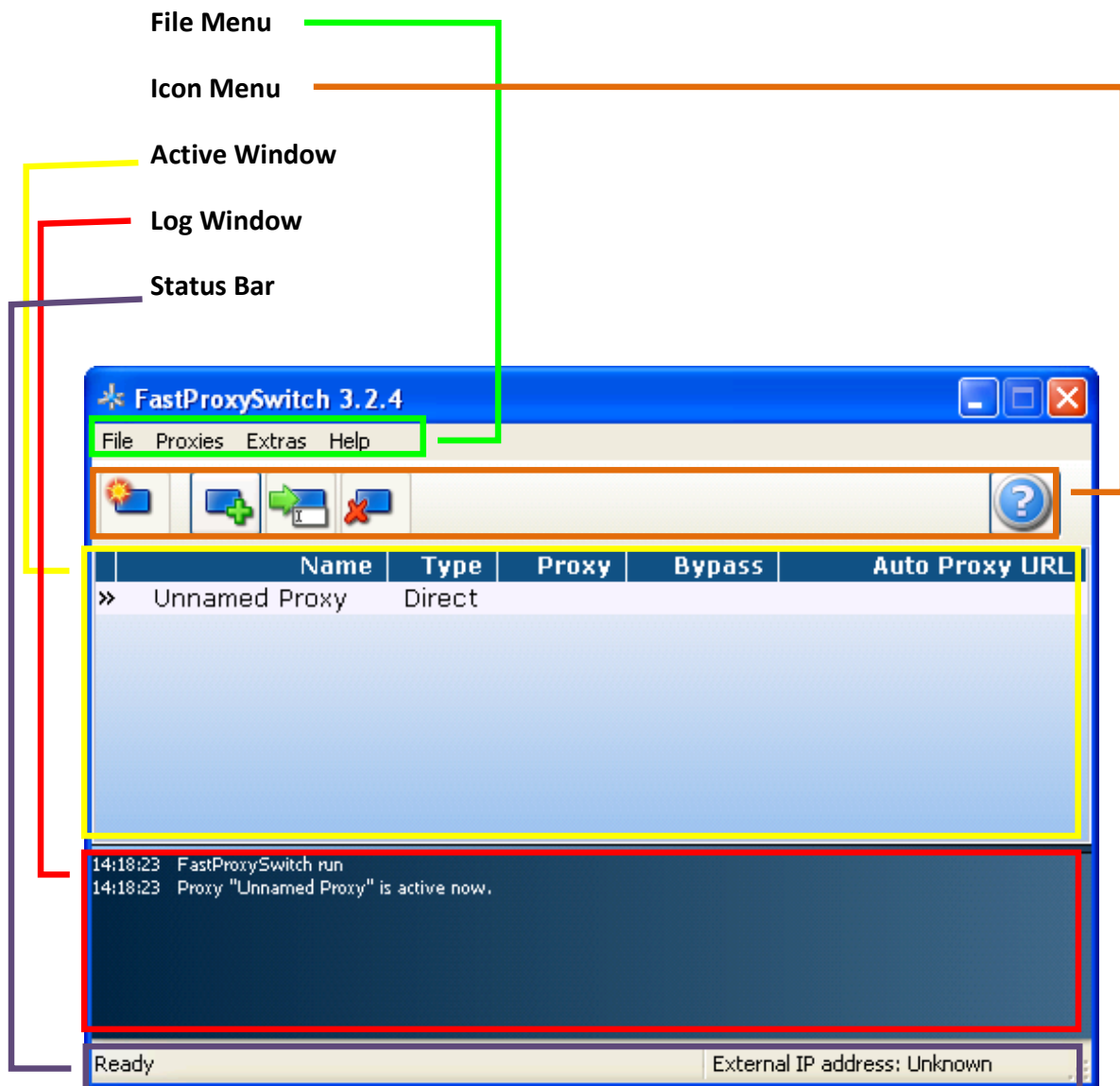
## Functionalities of the program

The major functions and features of FastProxySwitch 3.2.4 are listed below:






1. Enables and disables direct connection proxy
2. Allows editing of proxy settings
3. Stores and manages frequently used proxy settings
4. Compatible with the automatic configuration scripts
5. Automatically activates proxy settings
6. Runs cleanups before and after proxy settings changes
7. Runs external applications before and after proxy settings changes
8. Automatically update of the proxy settings when the Network Adapter Configuration is changed

## User Interface

FastProxySwitch 3.2.4 comes with a tidy and user-friendly interface, allowing you to access all the functions in a fast and simple manner. Briefly, these are the main parts of the user interface, and will be referred to in the rest of the user guide:



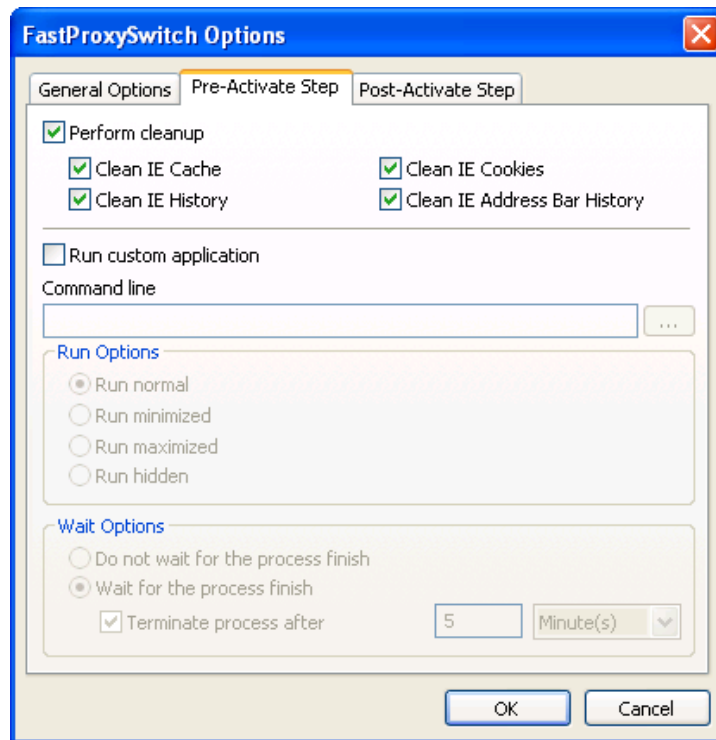
Below is a list of the main features and functions, as they exist on the interface:

<b>Interface</b>	<b>Function</b>	<b>Description</b>
	Activate Proxy	Activate selected proxy from the proxy list
	Add Proxy	Add new proxy to the proxy list
	Edit Proxy	Edit settings of selected proxy from the proxy list
	Delete Proxy	Delete selected proxy from the proxy list
	Help	Order or Register Product; Version Information

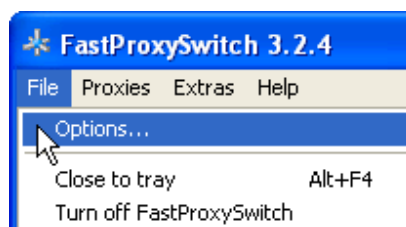
## Quick Start Guide

### After Installation

When FastProxySwitch is run for the first time after installation, an options panel opens. You should configure these options before you run FastProxySwitch for the first time.



Under the General Options Tab, you can choose to run FastProxySwitch on startup, or have it running in your System Tray. In the Pre-Activate Step and Post-Activate Step Tabs, you can have the program perform a number of tasks before or after the proxy settings are activated. Once these options have been set, they can be changed by going to File → Options in the File Menu

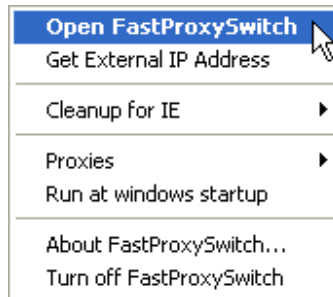


## Accessing the Program from the System Tray

FastProxySwitch appears on the System Tray as shown on the diagram below:

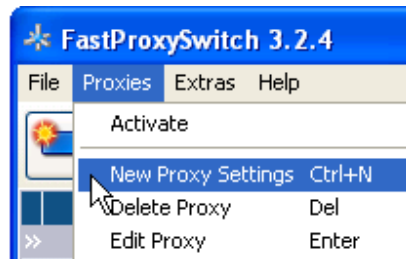


When you right click on the icon, you can open the main program window (“Click on Open FastProxySwitch), or simply access each of the functions from the pop-up window:

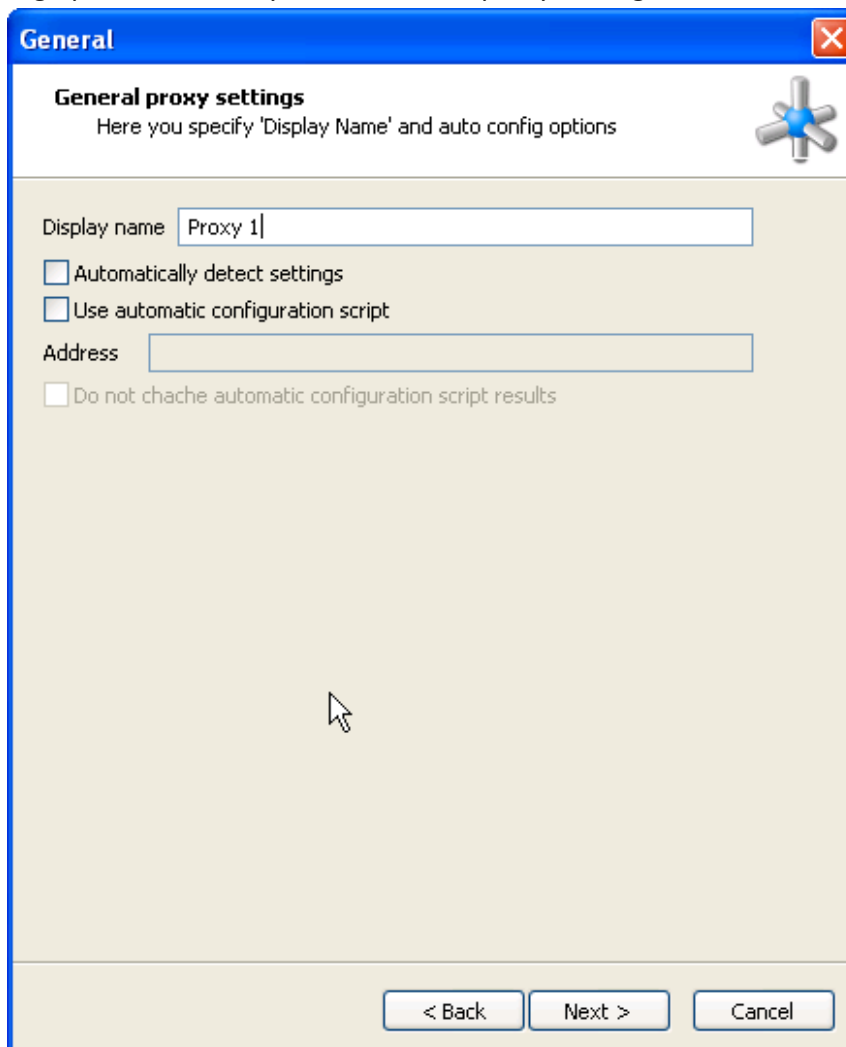


## Setting up proxies

To set up a new proxy configuration, simply click on the Add Proxy button on the Main Window, or select Proxies → New Proxy Setting, or use the short cut key Ctrl+N.



This will bring up a window for you to enter the proxy settings:



Clicking on **Next >** will take you through each of the steps for setting up a proxy:

**Proxy settings**  
Specify proxy settings you wish to use

Enable proxy

Auto anonymous proxy (Coming soon!)

Update proxies list    Manage proxies list

Manual proxy settings

Type	Proxy Address	Port
HTTP	<input type="text"/>	<input type="text"/>
HTTPS	<input type="text"/>	<input type="text"/>
FTP	<input type="text"/>	<input type="text"/>
Gopher	<input type="text"/>	<input type="text"/>
Socks	<input type="text"/>	<input type="text"/>

Use the same proxy server for all protocols

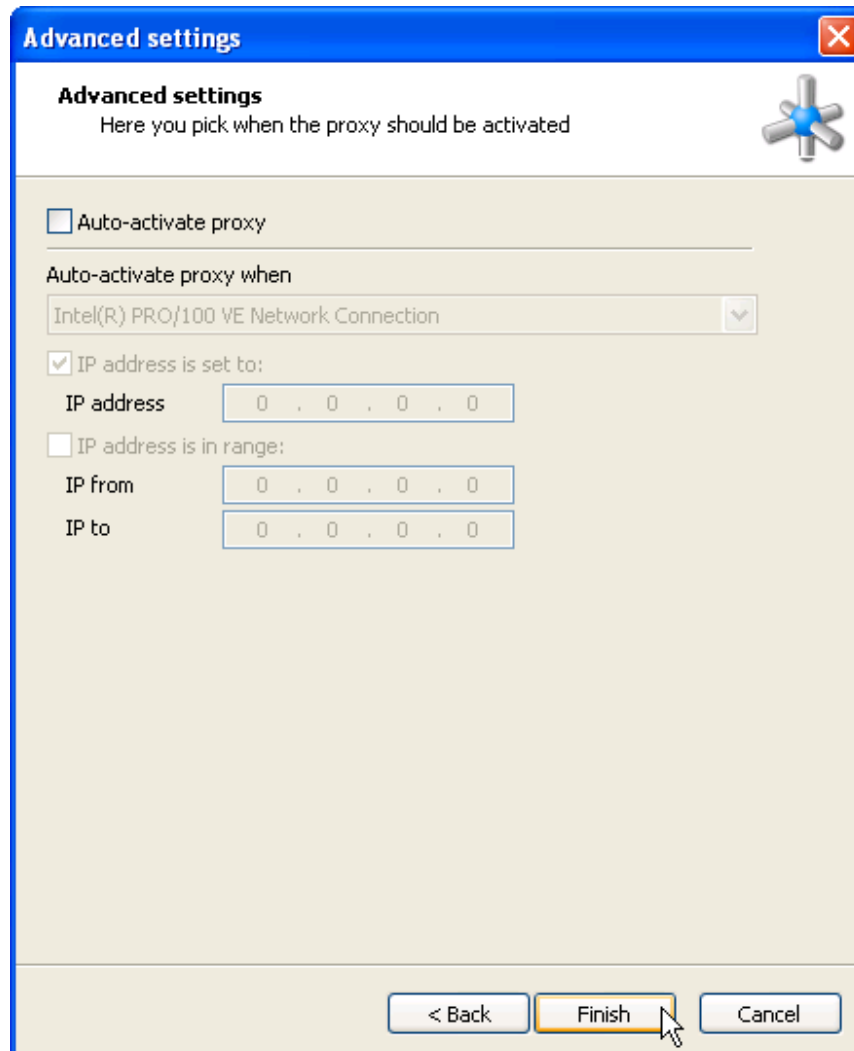
Do not use proxy server for addresses beginning with:

Use semicolons (;) to separate entries.

Bypass proxy for local addresses

< Back    Next >    Cancel

If at any stage you want to change details, you can go back to the previous screens by pressing < **Back**, or simply click on **Cancel** and start all over again.

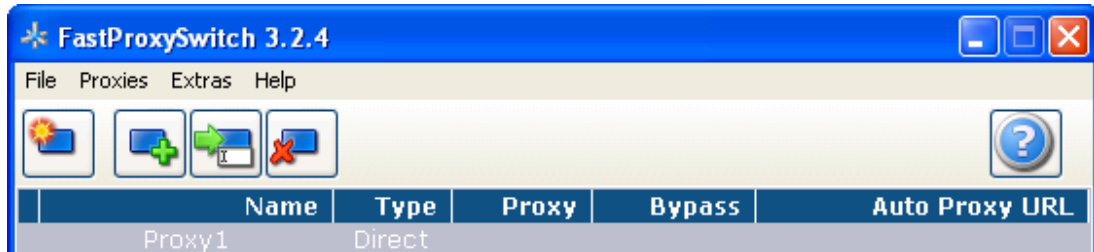


The main idea of Auto Activate feature is to allow to FastProxySwitch to automatically activate existing proxy settings when network/LAN environment is changed (for example you have proxy-server on "192.168.0.1:3128" at work, and "proxy.isp.com:8080" at home). To allow FastProxySwitch to automatically change active proxy settings, just write in your work IP address (or IP address range) at the advanced tab of work-proxy. Now the correct proxy settings will activated as soon as you plug the Ethernet cable to your laptop at home, or at work.

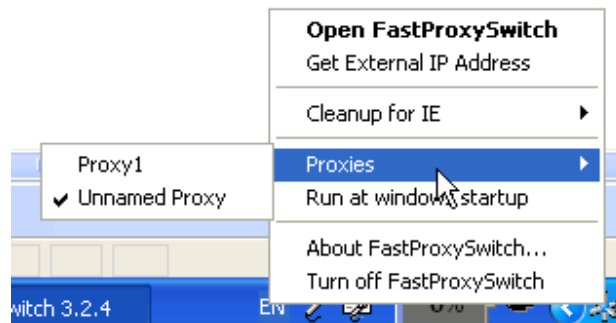
Once all the information has been filled out, simply click on the Finish button, and the new proxy should appear in the Active Window on the Main program.

## Working with proxies

Once you have set up the proxy and it is displaying in the main window, you have options to Activate, Edit or Delete the proxy using the File or Icon Menu:

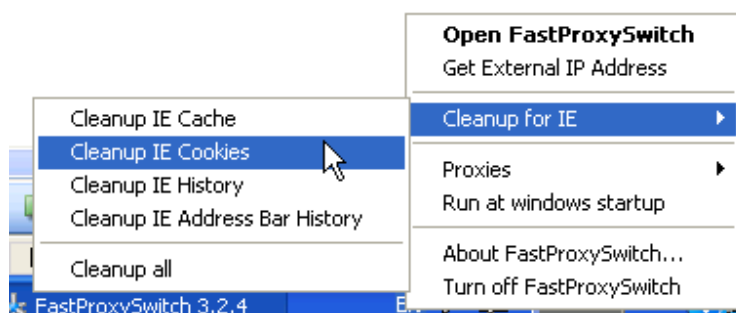


To switch between proxies, you can simply double click on the proxy of your choice from the Main program window, or access a list of predefined proxies from the System Tray:



## Cleaning up after proxy setting changes:

If you didn't set the option for FastProxySwitch to automatically do this, you can access the function from the System Tray, and select whether you want the IE Cache, Cookies, History, Address Bar History or all files to be deleted.



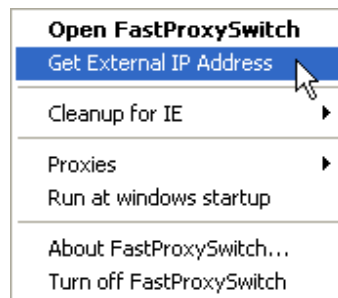
## Get External IP Address:

An external IP address is the unique identifier assigned to you by your Internet Service Provider (ISP). There are many occasions when you need to know the external IP address:

1. You want users to connect with your machine for remote assistance
2. For establishing a VPN and map drive letters to your computer or network
3. For IP filtering so that only machines from your External IP address can access the resource
4. For establishing link with the home computer or the server on the internet.

The 'Get External IP Address' feature will show you your external IP address (visible from internet). In most cases, it will be different on different global proxy servers.

You can get your External IP Address either from the system tray

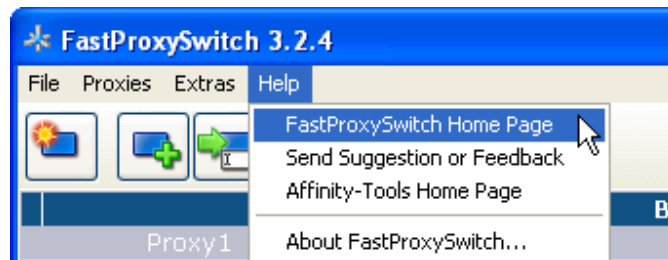


It is also displayed on the Status Bar, at the bottom of the Main program window.

**NOTE!** External IP Address will not be available for viewing if you are not connected to the Internet, have not been assigned an External IP Address, or if it is being hidden by another software.

## Summary

This concludes the brief guide to FastProxySwitch 3.2.4. We hope that you can get the most use of this program. If there are any problems, suggestions comments and feedback, you can go to the Help section of the program for resources, contact information and further details.



With your kind help and assistance, we can strive to make FastProxySwitch a bigger and better program to meet your needs. Thank you very much for using the program.